

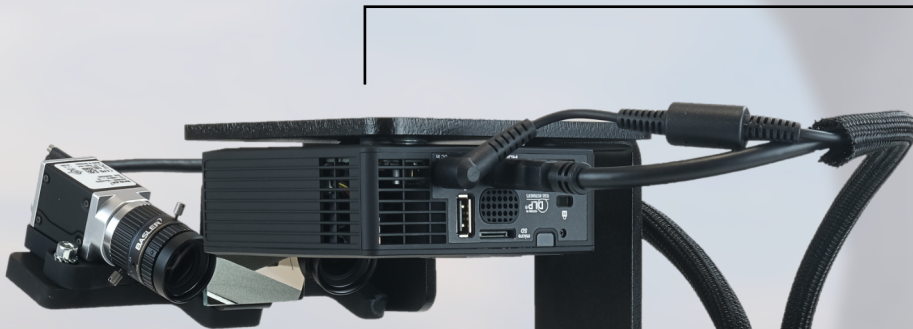
# EASY LAB

## essential desktop 3D scanner

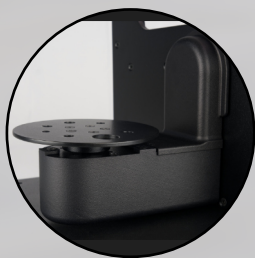
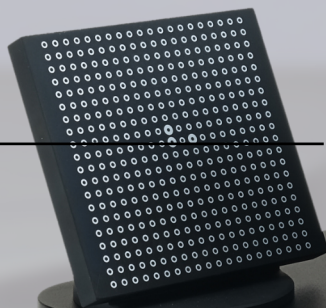
- Stable and practical
- Simple to use
- Efficient and low-budget



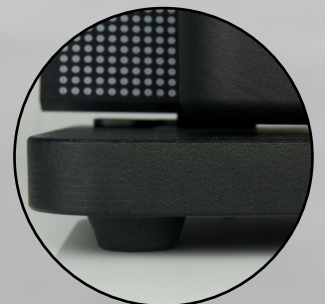
Optical unit identical to the highest performing models



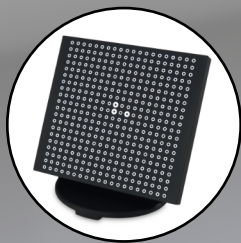
Compact design  
only 290 x 390 x 310 mm



Precise and silent movement  
system



Solid base with anti-vibration  
feet



Calibration master included,  
always at hand for a quick  
calibration



Calibration cube specifically  
designed for the calibration  
of the axes



Pre-formed support with  
cusps and indentations to  
optimize the alignment



Support with plasticine  
for adaptable  
positioning

## Technical Specifications

Accuracy	0.025 mm
Resolution (smallest detail acquirable)	0.010 mm
Camera Resolution	5 Mpx
Scan Field	150 x 110 x 90 mm
Export formats	Mesh: OBJ, STL, PLY, OFF / point of cloud : ASC
Scan Technology	Structured light

## Vertex Pro Scanning software

- updates included, forever
- simple and intuitive user interface
- scan with customized strategies
- texture/color management

